

Chuck Miller

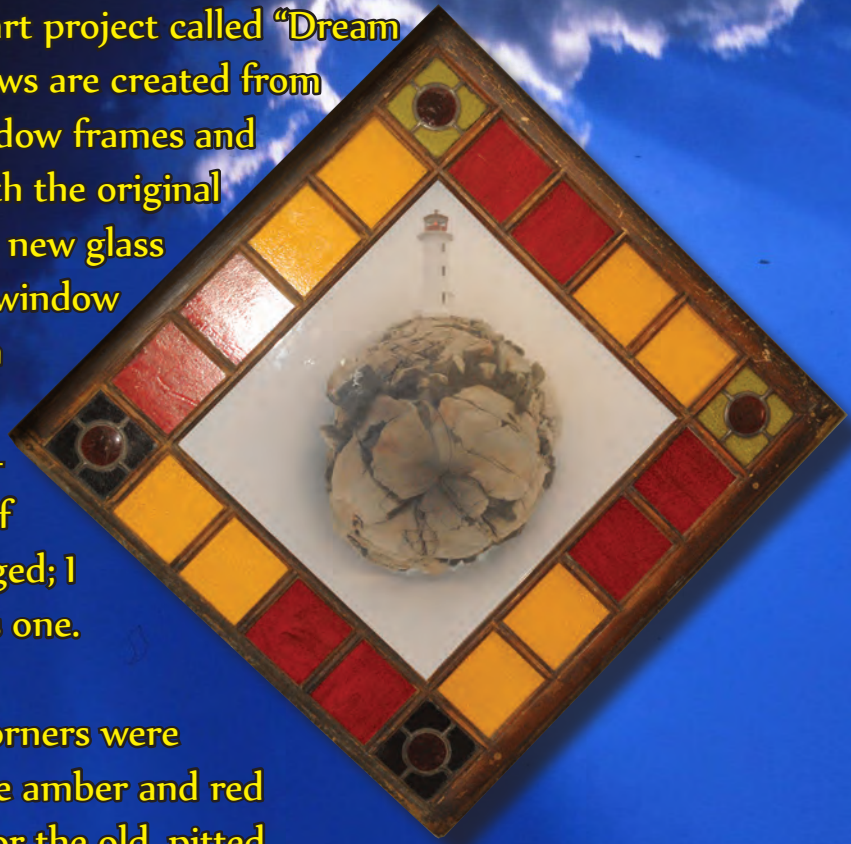
Chuck Miller is a writer and photographer from Albany, New York, who over the past decade has used his cameras to produce images that camera's aren't normally built to create. Through the use of "splitfilm" technology (loading multiple film reels into a single camera and exposing simultaneously), "star trails" (long exposures in the sky, which allow the stars to rotate in the heavens), "Dream Windows" (taking salvaged window panes and repurposing them as art). and other techniques, Chuck has created a unique and signature camera art form. There's beauty in the shots, but also excitement, wonder, joy, pain, and hope.

Many of these photographs have been chronicled in Chuck's popular and long-running Albany Times Union weblog (<http://blog.timesunion.com/chuckmiller>), and the creation of these images - as well as the trial and error and re-trial and re-error and eventual success - have drawn photography fans from around the world to read and enjoy his blog.



Dream Window 6: The Beacon

In 2012, I began a special art project called “Dream Windows.” Dream Windows are created from salvaged Queen Anne window frames and Tudor window frames, with the original broken glass removed and new glass installed. This particular window once hung in a mansion in Dorchester Heights, Mass. The mansion was later destroyed and razed. Four of these windows were salvaged; I was lucky to purchase this one.



The four rosettes in the corners were original to the window; the amber and red glass were replacements for the old, pitted, broken panes. The center artwork is a photograph I took in April 2010 of the iconic lighthouse at Peggy's Cove, Nova Scotia. The photo was wired up with a blinking, flashing LED light.

The artwork is called “The Beacon” because it relates and honors the lost souls who never received a chance to enjoy a full and rich life.

Size: 48” x 48”, in diagonal orientation. Final product built from salvaged window frame, stained glass, LED light and photograph. Photograph taken with Nikon D700 camera, Nikkor 28mm f/2.8 manual focus lens, shot and combined in a “polar panorama” final output.

Dream Window 7: The Sacred Shore

I have always found peace and tranquility on the shores of the ocean. These photographs were taken in Atlantic Canada and represent morning sunrises, pounding surf and tranquil clouds. To realize that these shores have different, spiritual meanings for everyone from fishermen to beachcombers, from joggers along the trail to lovers in the sand, it shows that the beach is one of God's most thoughtful and awe-inspiring creations.

This artwork is one of my "Dream Windows," and the little metal thermometer on the side of the window contains a passage from the Book of Psalms. It also has a secondary meaning - you can see what the temperature is indoors, so that you can daydream your cares away by staring outdoors.



Size: 30" x 33". Final product built from salvaged window frame, photography, and souvenir wall thermometer. Center photograph taken with Nikon D700 camera, Vivitar 19mm f/3.8 lens.

Midnight at the Palace Theater

Easter Sunday, 2011. I'm parked in front of Clinton Avenue, my Nikon F100 camera at the ready, and I captured this image. You might think it



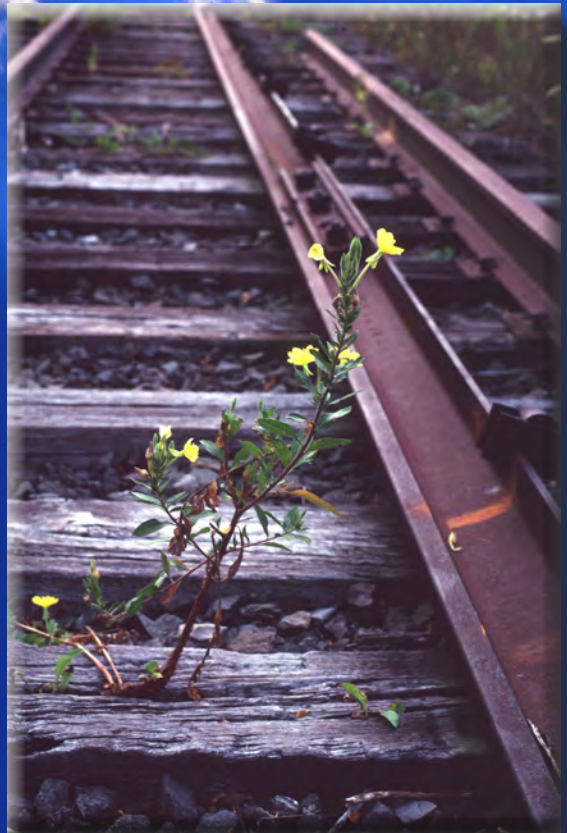
was photographed in the 1940's, in the heyday of the movie palaces that populated the Capital District. But it was shot only a couple of years ago.

This picture has evoked more excitement and appreciation than any photograph I've ever taken. I was blessed that this picture earned multiple awards, and even today this picture still inspires me to go to the movies and enjoy the magic of the silver screen.

Size: 24"x36". Camera used: Nikon F100. Film used: Efke 25 B&W film. Lens used: Kiev MIR-20H fisheye lens. 45 second exposure at f/8.

The Railsplitter

In 2010, I shot with Kodachrome slide film, it was the final year that such film could be processed and developed. This picture in August 2010 was shot in Voorheesville, at the western terminus of a 9-mile stretch of decommissioned railroad that will eventually become the Albany County Rail Trail. This humble weed had burst through an old railroad tie, and did whatever it could to reach the heavens and the sun's blessed nourishment of light. Of all the pictures I have ever taken with Kodachrome film, I treasure this one the most.



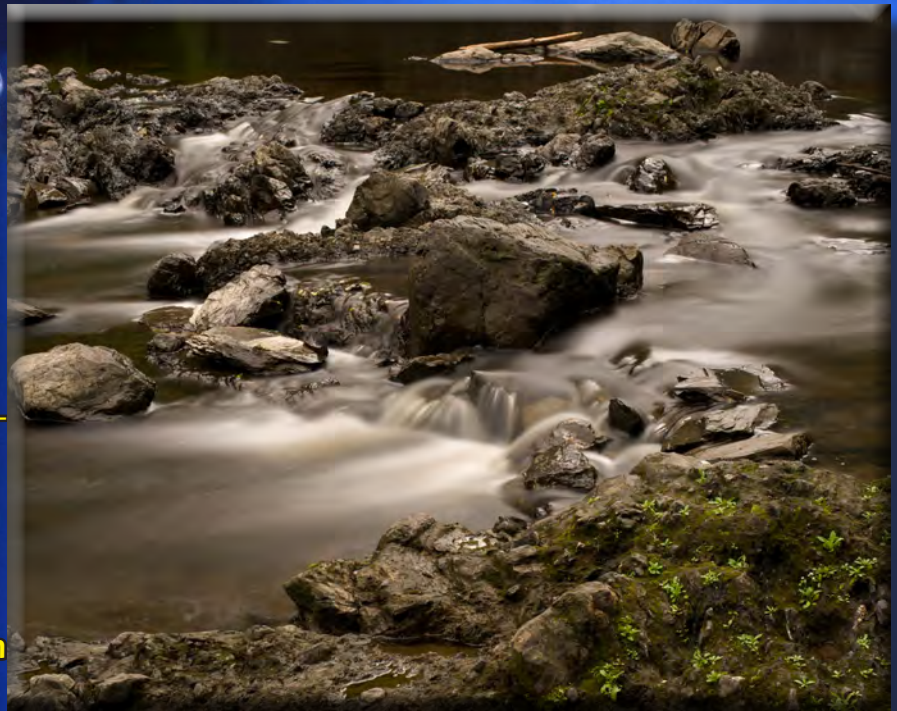
To me, this picture symbolizes the strength of those who, despite everything that has ever hurt them, have found a way to survive and to thrive and to achieve. They've broken through the barriers placed by those who want to hold back progress and strength.

Size: 11"x14". Camera used: Nikon Nikkormat FTn camera. Film used: Kodachrome 64 film.

Poestenkill Cascade

This picture of the Poestenkill Falls in Troy, N.Y., was taken with a very special lens filter. The filter, known as a “neutral density” filter, allows the flowing waterfalls to appear smooth and gauze-like, almost as if the falls were painted with streaks of white.

This was one of the first pictures I captured with this neutral density filter, and it achieved several awards in 2012. The print available is a metallic print that makes the browns and whites and greens in this picture simply “pop” upon viewing.



Size: 8"x10". Camera used: Nikon D700. Lens used: Nikkor 28mm f/2.8 E-series lens, with Hoya ND400 neutral density filter.

Barn Versus Weeds

Imagine if you will, a barn in Greenfield Center, N.Y., where the red paint still shines on the old wooden timbers. Now add to it a growth of green creeping weeds, fighting their way out the barn door.

I was fortunate to find this barn in August 2010, and captured its angry beauty with Kodachrome film. To me, this picture represents Mother Nature taking back what Man has created, returning the idyllic beauty of the North Country by charging through the structures of timbers and beams.

If I could get those vibrant colors one more time, I would do so in a heartbeat. Unfortunately, Kodachrome film was discontinued in 2009, and the development process ended in December 2010. Thankfully, though, I do have this picture to symbolize the beauty of a photographic process that is now as much a part of history as the images it captured.



Size: 11"x14". Camera used: Nikkormat FTn camera . Film used: Kodachrome 64 film.

Star Trails of St. Agnes Cemetery

On a chilly May evening in 2010, I entered St. Agnes Cemetery after hours, set up my camera on a tripod, and captured this long-exposure picture of the stars in the sky as they encircled, like a halo, the Morrone family monument near the back of the cemetery grounds.

This was truly my first successful "star trail" picture, and it won first place at the 2010 St. Agnes Cemetery Photography Competition. On a personal note, the prize money earned from this photograph helped to pay for a new grave marker for a family member who was buried on the St. Agnes Cemetery grounds.



This picture is specially framed in an ornate white housing, especially constructed and crafted for this exhibit.

Size: 8"x10". Camera used: Nikon D700. Lens used: Kiev-MIR 20H fisheye lens.

Nipper's Polar Panorama

A fiberglass statue of the RCA Victor trademark of Nipper, "His Master's Voice," has stood atop an Albany, N.Y. warehouse for more than 50 years. In June 2010, the owners of the building allowed me to climb to the roof and take this picture.

What you see here is called a "Polar Panorama," in which I shot more than two dozen images and then used a software program to stitch them together, so that Nipper appears to be standing on his own industrial planet. It was a cloudy afternoon, and although I thought the clouds would be detrimental to the shot, they actually enhanced the final image by creating an ethereal background.



Size: 8"x10". Camera used: Nikon D700. Lens used: Nikkor 28mm f/2.8 E-series lens. Twenty-eight images combined in polar panorama capture.

The Neighborhood Watch

I was fortunate enough to capture this photo of geese, as they looked for food and grubs along a sign that denoted the area as a “Neighborhood Watch” community. The geese were quite docile and let me take their pictures - even though I used my telephoto lens so that I wouldn’t disturb their morning snacks.

I had thought about trying to crop this photo closer, to get the birds themselves without the signage - but realistically, the sign does make the image worthwhile. I mean, if you have geese walking around in your neighborhood, you have a built-in “neighborhood watch” just from that.



Size: 8"x10". Camera used: Nikon D700 camera . Lens used: ZOOM-Nikkor 50-300mm telephoto.

The Lenten Meal

During the season of Lent, the faithful abstain from eating meat on Fridays. This means that the local fish fry restaurant does a booming business on that day.

I captured this triple image by mounting a camera on a tripod, and then loading and unloading three specific types of film into its chassis. As each film was loaded and eventually exposed, I angled and tilted the camera to achieve different results.

Then, all the films were developed and re-assembled into this image.

I used print film, slide film and black-and-white film for this triple image, just as there are three films in the picture, so too is the holy trinity of the Father, the Son and the Holy Spirit. Plus, Bob & Ron's Fish Fry has that cool "Googie" architecture-style signage...



Size: 16"x20". Camera used: Agfa Clipper Special f/6.3.

Films used: Kodak Ektar 100 35mm (print film), Kodak E100 35mm (slide film), Kodak Verichrome Pan 616film (black and white background).

The Agfa Bridge Over Ansko Lake

This is one of my “splitfilm” photography attempts, in which two rolls of film were actually shot simultaneously in one camera. Prior to shooting this picture, I rolled a strip of 35mm film (the “Agfa”) into a roll of 40-year-old black-and-white film (the “Ansko”). Then I took the combination and photographed Albany’s Washington Park on a sunny May 2011 afternoon.

Then, both films were developed separately and eventually re-stitched together as one large image with the aid of digital software.

You can see the rippling and aging of the older B&W film, which adds to the beauty and depth of the photograph. Technically, the brands “Agfa” and “Ansko” are from the same photography company in Binghamton, N.Y. , who was a rival of Kodak for many years.



Size: 16x20. Camera used: Agfa Chief 616 film camera.

Film used: Agfa Vista 200 35mm film, which was hand-rolled into 40-year-old Ansko All-Weather Pan 616 film and exposed simultaneously.

Star Trails of Thacher Park

It's June 2010, and I'm trying to get a photo of the stars cascading over the Capital District. My camera is positioned atop the Helderberg Escarpment at Thacher Park, and with a coin-operated binocular viewer in the foreground, I capture not only the trails in the sky, but also an airplane or two as it leaves the airport.

This picture took so much to put together. I had to acquire a permit from the Parks Department, and this was only after Governor Paterson found money in the budget to operate the state parks.



The stars cascading down the horizon almost look like angels watching over all people, guiding them on a world of adventure and reverence and wonder.

Size: 8"x10". Camera used: Nikon D700. Lens used: Kiev MIR-20H fisheye.

Pies on the Windowsill

I originally thought that this building in downtown Albany was to receive a simple cleaning, and that the brickface was in mid-restore condition. Then I realized - hey, the uncleaned portion of the brickface almost look like home-baked pies. And before I let anyone restore or paint over those white brick grouts... I captured this image.

The photo was taken with one of my favorite black and white films, a Croatian film called Efke. Efke isn't made any more, and I still hold a few rolls of this magical film in my possession. I'll never know where I'll find a place to capture another image like this, but I'm glad I got the photo this time.



Size: 8"x10". Camera used: Nikon F100. Lens used: Nikkor 50-300 f/4.5 telephoto lens. Film used: Efke R25 B&W film.

Night Train to Heaven

In 2012, I experimented with a “single shot: half shot” technique, in which I photographed an object with one camera, then re-used the film and took another picture in a second camera. In this case, I used two vintage cameras and a vintage roll of film to capture this composite. The railroad tracks can be found



in Albany's downtown warehouse district; while the neon sign is from a rescue mission on South Pearl Street in Albany.

This picture is inspired by the song “Night Train” by James Brown and the Famous Flames; as if the path to salvation and righteousness can be found along the railroad tracks, as if going through that trestle in the center of the picture might also recall going through redemption and reconciliation with the Lord.

Size: 10x20.

Camera used: Agfa Chief 616 film camera, then Agfa Clipper Special f/6.3 camera.

Film used: Kodak Verichrome Pan 616 film.

More Men Wear Bond Clothes

The Capital District is full of “ghost signs,” faded brickads that promote products from a bygone era. These signs still exist today, and have become part of the fabric of our neighborhoods.

I captured this 30-second exposure in 2010. The camera was mounted on a tripod, and the light trails in the street are from the headlights of cars traveling down State Street and making a left turn onto South Pearl Street.

Perhaps two or three generations ago, Albany residents and politicians shopped at Bond Clothiers for their haberdashary needs. Today, this sign still advertises a product that represents the finest in clothing and style for the discernable, self-confident man.



Size: 12"x12". Camera used: Nikon D700 camera. Lens used: 28mm f/2.8 E-series lens.

Low Tide

Saints Rest Beach in Saint John, New Brunswick is part of the Bay of Fundy, and contains the largest tidal shift in North America. On Thursday morning, April 11, 2013, I got this photo of the low tide - with the colored rocks and sand, as the sun rises in the horizon.

Capturing beach sunrises is something that I truly enjoy. The only sounds you hear are of the splashing surf, and maybe a hungry seagull or two. The photo is a combination of a long exposure for the bright colors in the distance, and the camera's flash to bring out the color in the rocks.



I truly appreciate the serenity and peace in this photograph. It was worth traveling over 10 1/2 hours from Albany to Saint John if it meant getting a photograph like this for my collection.

Size: 8"x10". Camera used: Nikon D700. Lens used: Vivitar 19mm f/3.8 ultra-wide angle. Five images combined in HDR capture.

"i'm a ghost of my former self"

This former Hess station in Menands, for a while, was a boarded-up shell of a building. Normally these buildings get tagged up with graffiti and other blighted eyesores, but it looks as if the graffiti artist used this building to send a message about the structure itself. Or maybe, just maybe, it was a message from the graffiti artist about his own personal life and choices. Perhaps he too walks a lonely street and is searching for meaning in his life.

This picture was taken in late 2012; by the time I came back to take the picture with other camera equipment, construction had begun on renovating this structure from its previous incarnation into what it is today, a small used car dealership.



Ice Cream Open

The irony of a drive-in theater's ice cream parlour being open for business in the middle of a snowstorm is not lost on the viewer. The Jericho Drive-In, one of the Capital District's beloved open-air theaters, recently built a standalone ice cream parlor and snack shop, which operates independently of the film schedule.

The film I used for this picture is called Svema film, it was manufactured in the Soviet Union during the height of Communism. Fresh Svema film allows for deep contrasty pictures. Expired Svema film can also create wonky, grainy, industrial images that look like snow or soot. I combined three exposures into an high-dynamic-range ("HDR") format, which enhanced the contrast between all three photos.



Size: 12"x12". Camera used: Kowa Super 66 camera . Film used: Svema GOST 65 (ISO 64) 120 film, film expired in 1992, three images combined in HDR capture.

Black Starlight

In early 2012, I set up my tripod and my wide-angle lens to capture the sun as it made its morning journey over the Hudson River. These pictures were taken every fifteen minutes, and then combined as one image of a “sun trail.” What you see in the distance is the morning glow as it creases over the horizon, and then as the sun rises into the heavens. And for every step the sun takes in its morning journey, so too does its reflection in the twinkling water.



I call this picture “Black Starlight” in that when, in our deepest, darkest moments, we think that the world is black and cold, there will always be a ray of sunshine to remind us of the wonders of the universe and the greatness we have in our lives.

I had experimented with “star trail” photography before, but this was the first time I had ever attempted a “sun trail” picture. And I think it turned out pretty well.

Size: 8”x10”. Camera used: Nikon D700 camera. Lens used: Vivitar 19mm f/3.5.

Twelve To The Third Power

The picture here was taken on December 12, 2012 - on the calendar it would be 12/12/12, or as seen here, "twelve to the third power." This picture was actually shot with a Trio3D camera, one of several that were manufactured in the late 1980's and which purported to take three-dimensional photographs.

Actually, what the camera did was take three images at the same time; you then sent your film to a special photo lab, which would send you back a lenticular "three-dimensional" photograph. The camera itself still works, so long as you only use it to produce triple-images like this.



This artwork originally appeared as part of the Photo Center of Troy's "One Day: 12/12/12" exhibit, in which all the pictures were taken on December 12, 2012.

Size: 16"x20". Camera used: Trio3D 35mm camera . Film used: Fuji 200 print film.

Artworks	Price
12 to the 3rd Power	\$50
Barn Versus Weeds	\$100
Black Starlight	\$50
Dream Window 6: The Beacon	\$350
Dream Window 7: The Sacred Shore	\$300
Ice Cream Open	\$50
“i’m a ghost of my former self”	\$75
Low Tide at Sunrise	\$75
Midnight at the Palace Theater	\$200
More Men Wear Bond Clothes	\$75
Night Train to Heaven	\$75
Nipper’s Polar Panorama	\$75
Pies on the Windowsill	\$50
Poestenkill Cascade	\$75
Star Trails of St. Agnes Cemetery	\$75
Star Trails of Thacher Park	\$75
The Agfa Bridge Over Ansco Lake	\$100
The Lenten Meal	\$100
The Neighborhood Watch	\$50
The Railsplitter	\$100

Accepted payments: cash, checks, money orders, credit cards through PayPal.

Please make check or money order made payable to Chuck Miller

Please contact Chuck Miller at 518-727-1783 or at boardwalk7@aol.com for credit card payments through PayPal.

All purchased artworks must remain on display for the remainder of the show’s run.